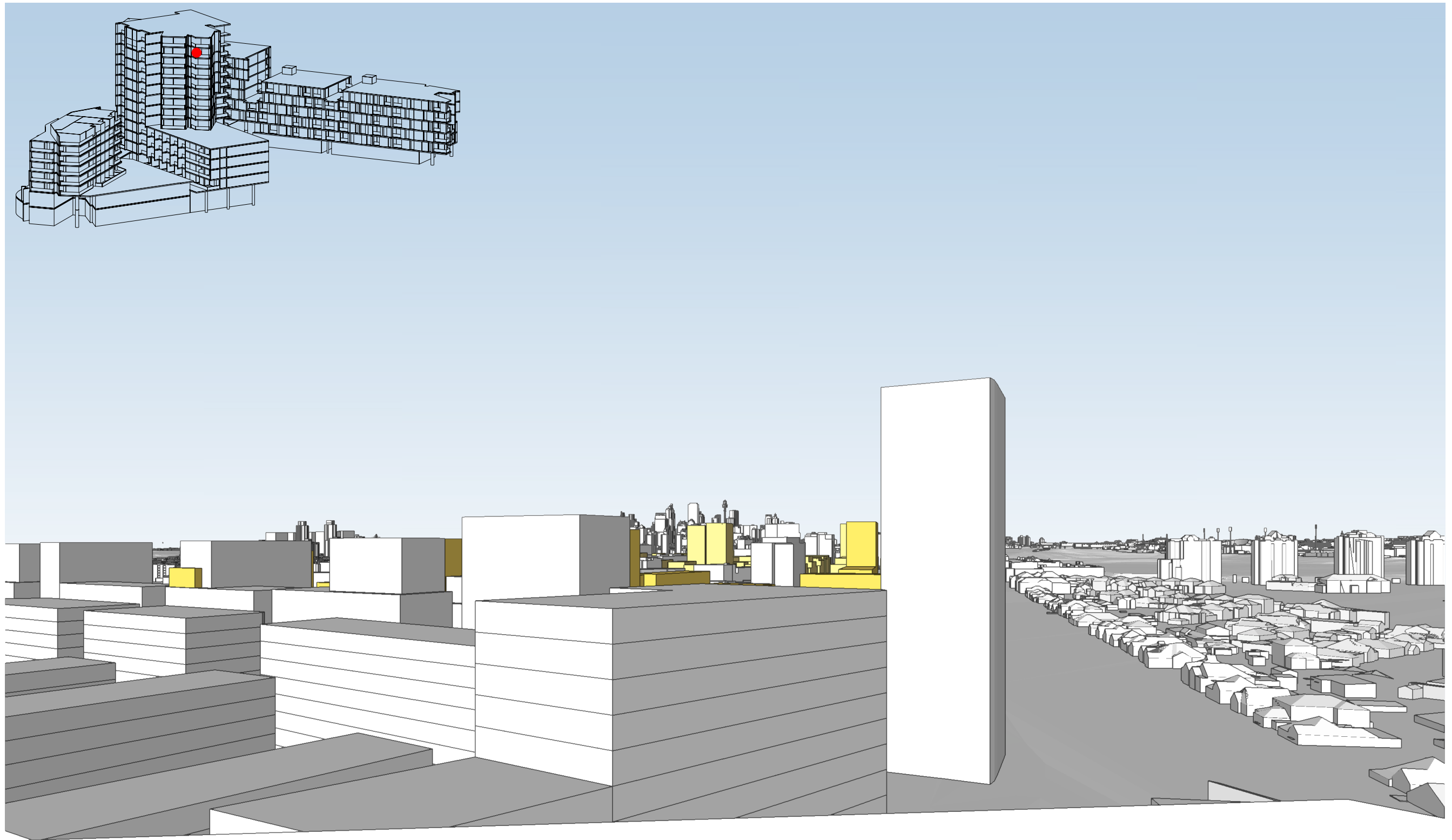


Attachment A7

View Studies



LINK ROAD TOP LIVING LEVEL

Lens: 50mm CAMERA RL: 64.350
 Film: 70mm FLOOR RL: 62.850

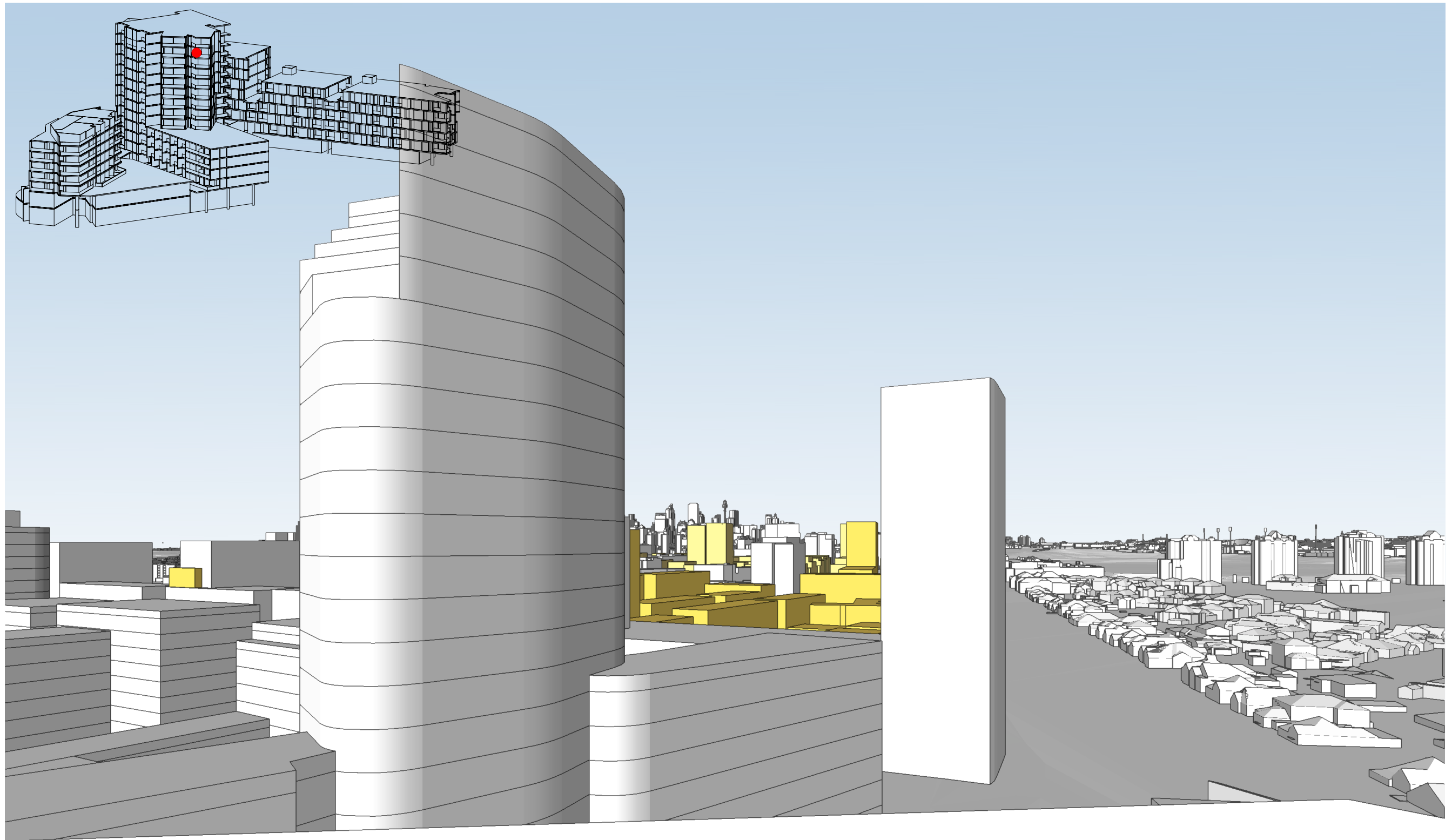
PROJECT DETAILS
 SUTTON SITE
 ZETLAND
 for
 MERITON

MAKO ARCHITECTURE PTY LTD
 SUITE 108, 59 MARLBOROUGH STREET
 SURRY HILLS NSW 2010
 WWW.MAKOARCHITECTURE.COM.AU
 NOM. ARCH. REG. NO. 8886



REVISION
 NTS at A3
 Plot Date:
 2129_MEW STUDIES.vwx

DRAWING TITLE
 LINK ROAD_TOP FLOOR
 V-001-A



LINK ROAD TOP LIVING LEVEL

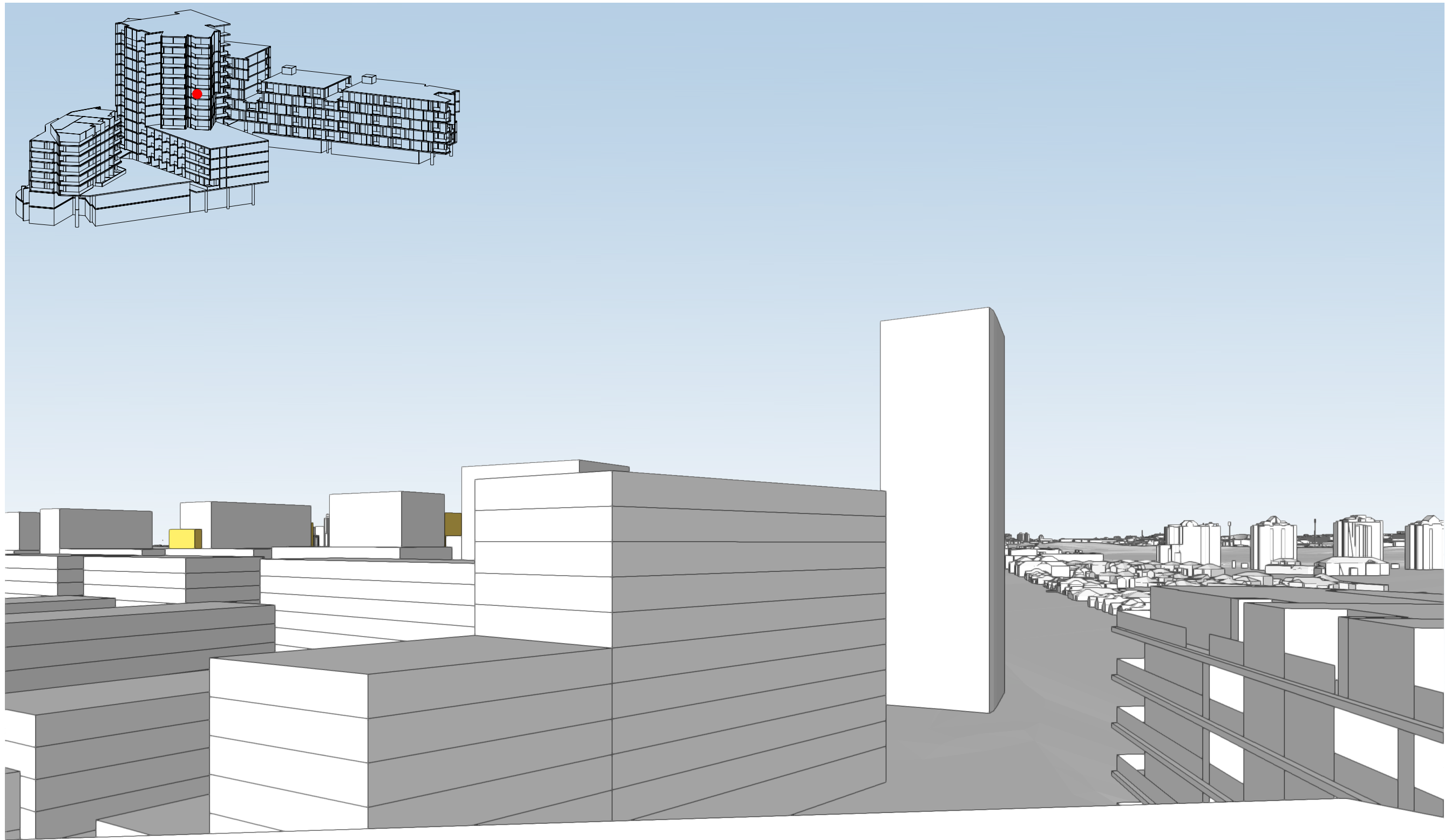
Lens: 50mm CAMERA RL: 64.350
 Film: 70mm FLOOR RL: 62.850

PROJECT DETAILS
 SUTTON SITE
 ZETLAND
 for
 MERITON

MAKO ARCHITECTURE PTY LTD
 SUITE 108, 59 MARLBOROUGH STREET
 SURRY HILLS NSW 2010
 WWW.MAKOARCHITECTURE.COM.AU
 NOM. ARCH. REG. NO. 8886

REVISION
 NTS at A3
 Plot Date:
 2129_MEW STUDIES.vwx

DRAWING TITLE
 LINK ROAD_TOP FLOOR
 V-0001-B



LINK ROAD TOP LIVING LEVEL

Lens: 50mm CAMERA RL: 51.950
 Film: 70mm FLOOR RL: 50.450

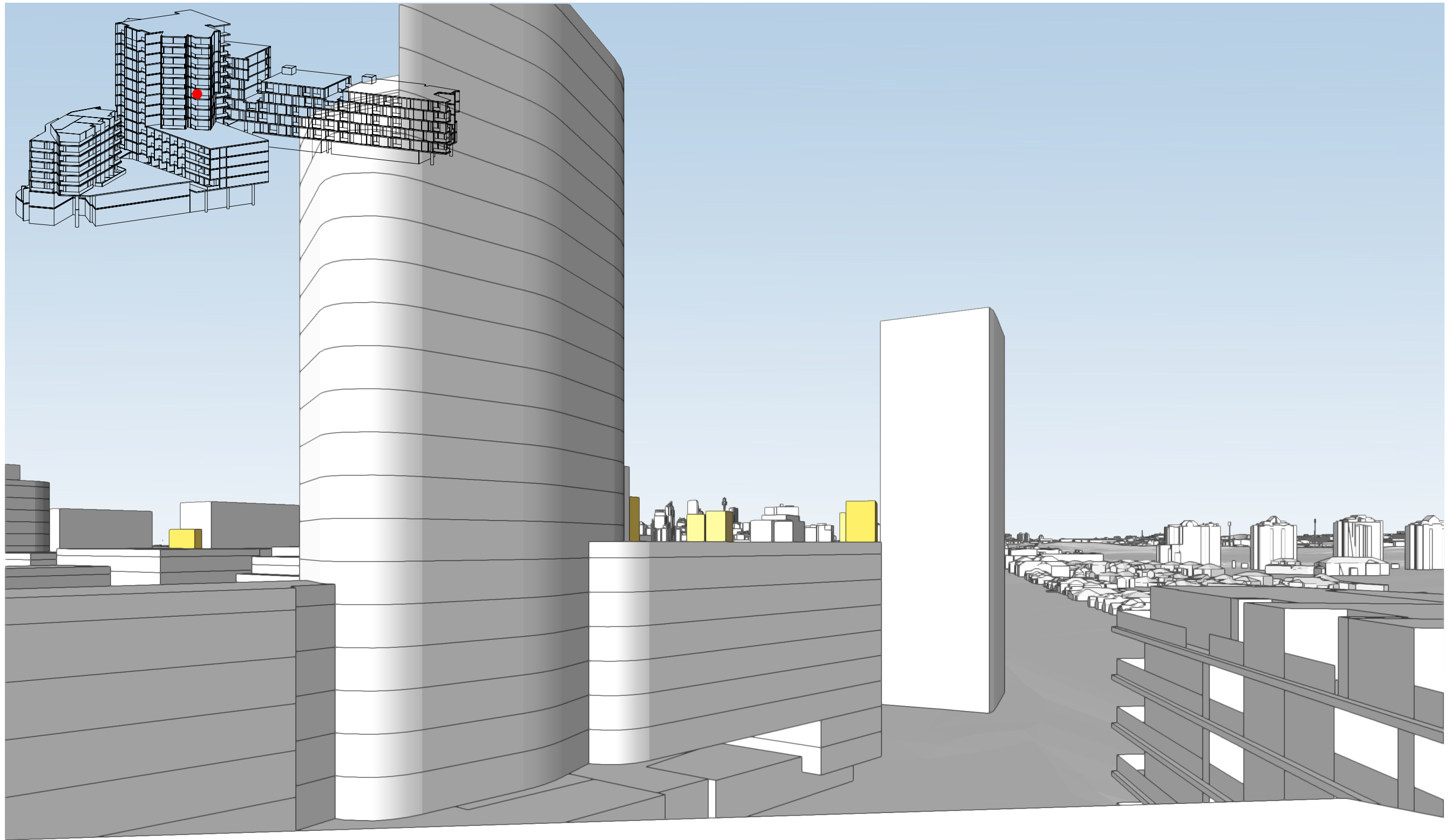
PROJECT DETAILS
 SUTTON SITE
 ZETLAND
 for
 MERITON

MAKO ARCHITECTURE PTY LTD
 SUITE 108, 59 MARLBOROUGH STREET
 SURRY HILLS NSW 2010
 WWW.MAKOARCHITECTURE.COM.AU
 NOM. ARCH. REG. NO. 8886



REVISION
 NTS at A3
 Plot Date:
 2129_MVIEW STUDIES.vwx

DRAWING TITLE
 LINK ROAD_MID FLOOR
 V-0002-A



LINK ROAD TOP LIVING LEVEL

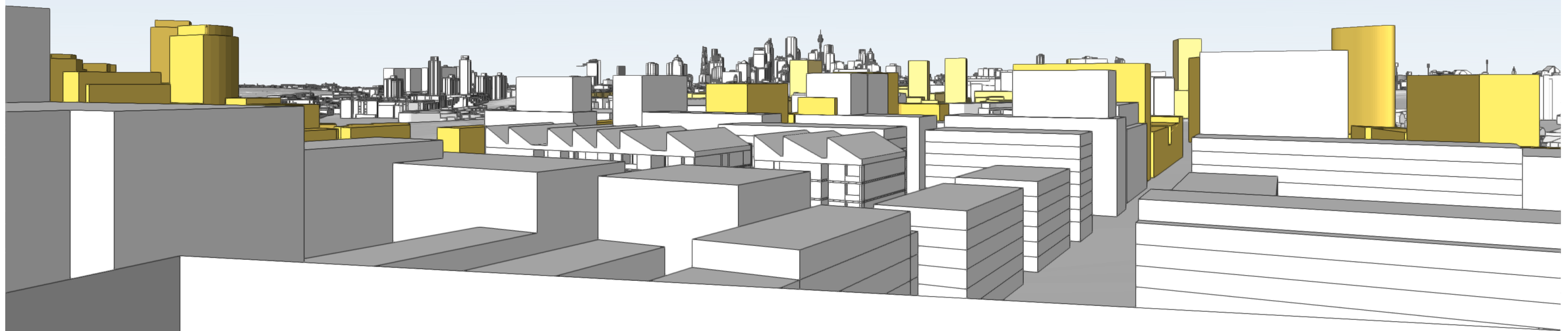
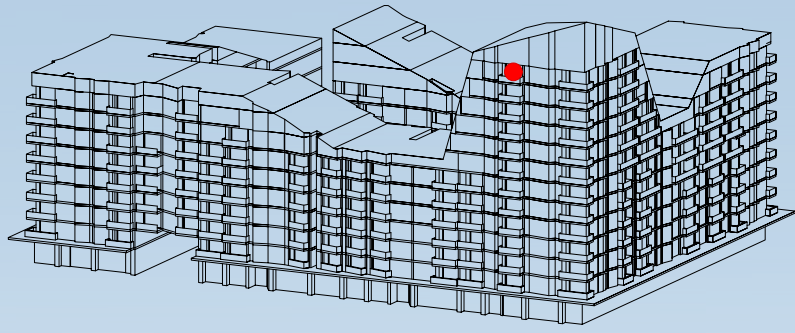
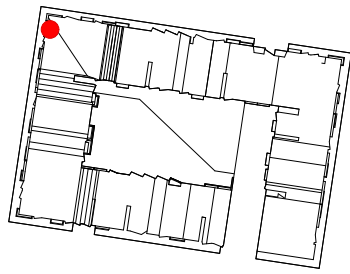
Lens: 50mm CAMERA RL: 51.950
Film: 70mm FLOOR RL: 50.450

PROJECT DETAILS
SUTTON SITE
ZETLAND
for
MERITON

MAKO ARCHITECTURE PTY LTD
SUITE 108, 59 MARLBOROUGH STREET
SURRY HILLS NSW 2010
WWW.MAKOARCHITECTURE.COM.AU
NOM. ARCH. REG. NO. 8886

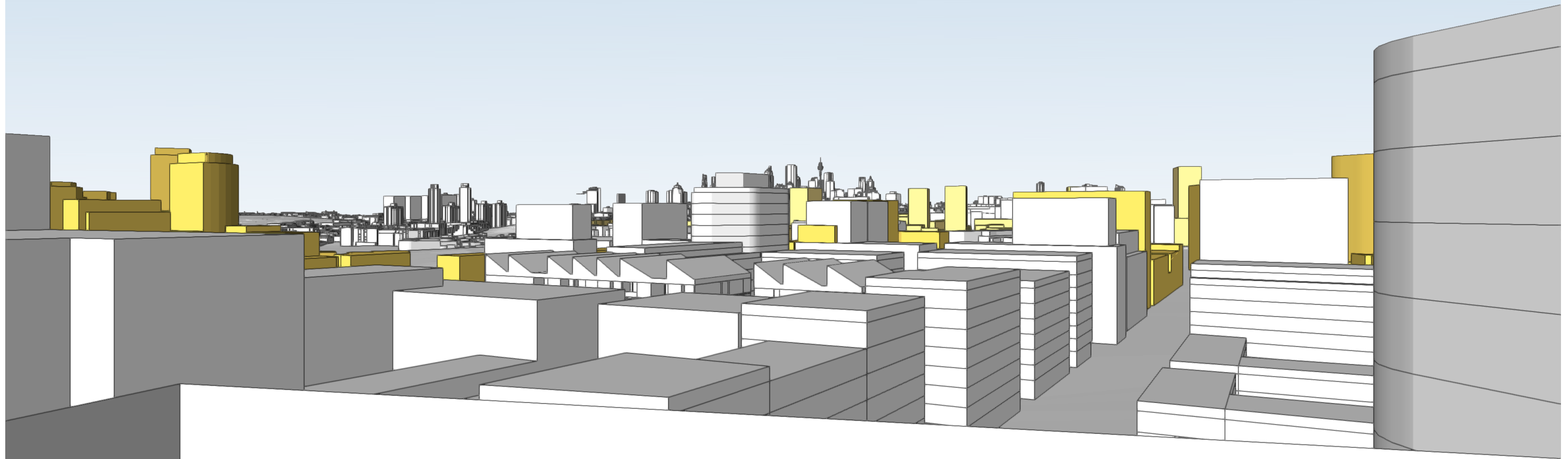
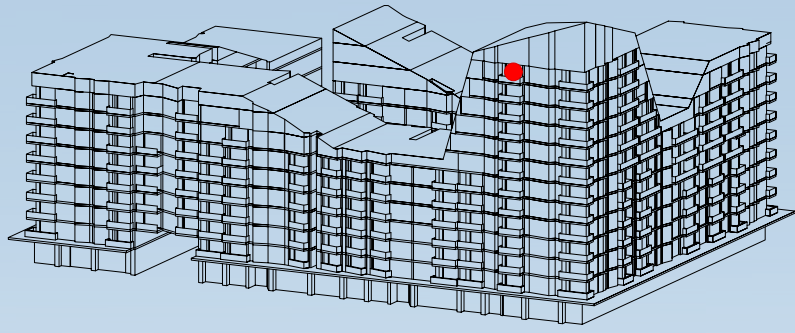
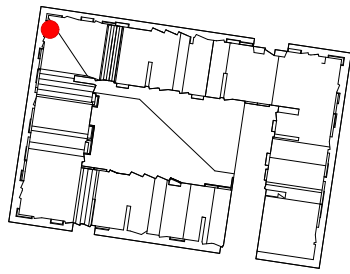
REVISION
NTS at A3
Plot Date:
2129_MVIEW STUDIES.vwx

DRAWING TITLE
LINK ROAD_MID FLOOR
V-0002-B



2 BUNMARRA ST TOP LIVING LEVEL

Lens: 50mm CAMERA RL: 62.800
Film: 70mm FLOOR RL: 61.100



2 BUNMARRA ST TOP LIVING LEVEL

Lens: 50mm CAMERA RL: 62.800
Film: 70mm FLOOR RL: 61.100